

Unit 2 WINDOWS 10 OPERATING SYSTEM

INTRODUCTION

- + Windows 10's user interface is an evolution of Windows 8's, with a focus on transitioning between behaviors suitable for the type of device and the available input methods.
- + To improve the experience for keyboard and mouse users, Windows 10 adds a new revision of the desktop.
- + Start menu and a virtual desktop system, and allows Windows Store apps to run within windows on the desktop as well as in full-screen mode.
- + The operating system will introduce new technologies and system components, including DirectX 12 and new frameworks for biometric authentication.

EVOLUTION OF WINDOWS 10

- + The goal of Windows 10 is to unify Windows PC, Windows Phone, Windows Embedded and Xbox.
- + One product families, as well as new product categories such as the Surface Hub and HoloLens, around a common internal core.
- + These products will share a common, "universal" application architecture and Windows Store ecosystem that expands upon the Windows Runtime platform introduced by Windows 8.
- + Windows 10 will also introduce a new bundled web browser, Microsoft Edge, to replace Internet Explorer.

WINDOWS 10 RELEASE

- + Windows 10 will launch in late-2015, likely by the end of July.
- + The Technical Preview will end on **15 April 2015**. Microsoft also debuted the 84in Microsoft Surface Hub and Windows Holographic.
- + The latter will allow users to create 3D models via a custom-built HoloLens

Desktop icons

➤ The icons called on the desktop

Icons are small pictures that represent files, folders, programs, and other items. When you first start Windows, you'll see at least one icon on your desktop: the Recycle Bin (more on that later). Your computer manufacturer might have added other icons to the desktop.

➤ Restore the old Windows desktop icons

Open Settings.

Click on Personalization.

Click on Themes.

Click the Desktop icons settings link.

Check each icon you want to see on the desktop, including Computer (This PC), User's Files, Network, Recycle Bin, and Control Panel.

Click Apply.

Click OK.

➤ icons on the desktop all disappeared?

If you have accidentally removed specific Windows desktop icons such as, MyComputer, Recycle Bin or Control Panel, then you can easily restore them from windows “Personalize” settings. Right-click on any blank area on the desktop and from the context menu, click on “Personalize”

➤ Show or hide all desktop shortcut icons

Press the Windows key + D on your keyboard or navigate to the Windows desktop.

Right-click on the desktop and click View in the drop-down menu.

Click on Show desktop icons to toggle them on or off.

Repeat these steps to reverse the process.

Desktop start button

- **Drag the icon directly into the open Start menu—from the desktop, an open window, the “All apps” list, or the left side of the Start menu. The right-click method. Right-click an icon wherever fine icons are found: in a window, on the desktop, in the “All apps” list, or on the left side.**

- **Start button in Windows 10**

The Start button in Windows 10 is a small button that displays the Windows logo and is always displayed at the left end of the Taskbar. You can click the Start button in Windows 10 to display the Start menu or the Start screen

- **to add folders to the Start Menu in Windows 10**

Click on the Start Menu. It's the Windows icon in the bottom left corner.

Click on Settings.

Click on Personalization.

Click on Start.

Click on Choose which folders appear on Start.

Click on the switch under the folder you want to add.

Desktop taskbar

If you'd rather let Windows do the moving for you, right-click on any empty area of the taskbar and click on Taskbar settings from the pop-up menu. Scroll down the Taskbar settings screen to the entry for "Taskbar location on screen." Click the drop-down box and set the location for left, top, right, or bottom.

➤ **customize my taskbar**

If you want to see labels for icons on the taskbar:

Step 1: Open Taskbar and Start Menu Properties by right-clicking on the empty area on the taskbar and then clicking Properties.

Step 2: Under Taskbar tab, next to Taskbar buttons, select Combine when taskbar is full option. Click Apply

➤ **display taskbar**

Step 1: Press Windows+F to go to the search box in the Start Menu, type taskbar and click Taskbar and Navigation in the results.

Step 2: As the Taskbar and Start Menu Properties window turns up, deselect Auto-hide the taskbar and click OK.

Desktop notification area

- ***The notification area on my PC?***

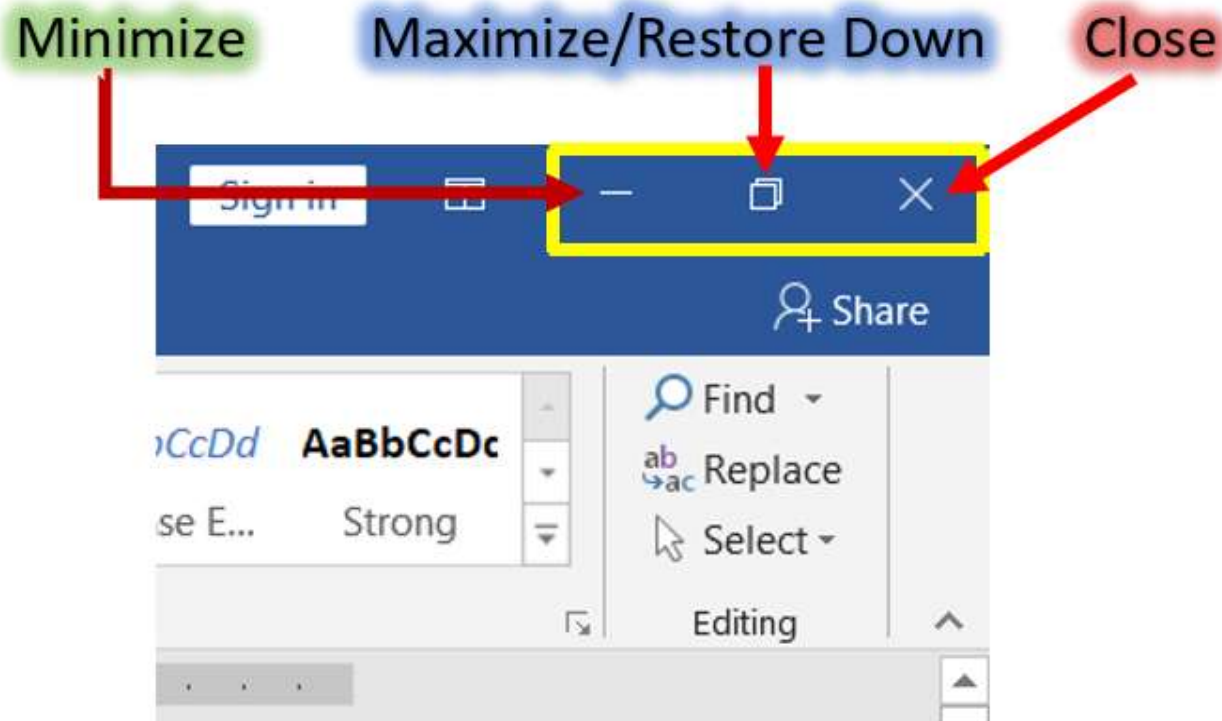
The notification area (also called the "system tray") is located in the Windows Taskbar, usually at the bottom right corner. It contains miniature icons for easy access to system functions such as antivirus settings, printer, modem, sound volume, battery status, and more.Jan 18, 2018

- ***To add an icon to the notification area***

To adjust the icons displayed in the notification area in Windows 10, right-click an empty part of the taskbar and click on Settings. (Or click on Start / Settings / Personalization / Taskbar.) Then scroll down and click on Notification area / Select which icons appear on the taskbar.Mar 12, 2017

Minimize, Restore, Maximize and Close

Minimize, Restore, Maximize and Close buttons are also called Control Buttons, appear at the top right corner of the (MS Office Suite of Applications) Word. These are discussed below:



Minimizing a Window:

When you minimize the document it disappears on the screen, then you can see only an application icon on the taskbar. This mode of an application helps you see the desktop and access other work.



Restore Down a Window:

The Restore Down mode shrinks the document size on the desktop.

Generally, this mode is easier to resize, move, open files and share the contents.

Maximize/Restore Down



Follow the steps below on “Restore Down” the Window/Application:

1. Click on the Restore button, which appears at the top right corner of the title bar, then automatically the size of a window shrinks on the screen (desktop).
2. Move your cursor at any corner/side of the application till your mouse cursor changes as double-headed arrow.
3. Then click and hold down the left mouse button, and then drag in or out the word document/application to (Resize) increase or decrease size of the document.

Maximizing a Window:

When you click on the Maximize button, automatically the size of an application fits the window, when it is on the restore down mode.

Generally, working on the maximize mode is so easier than other

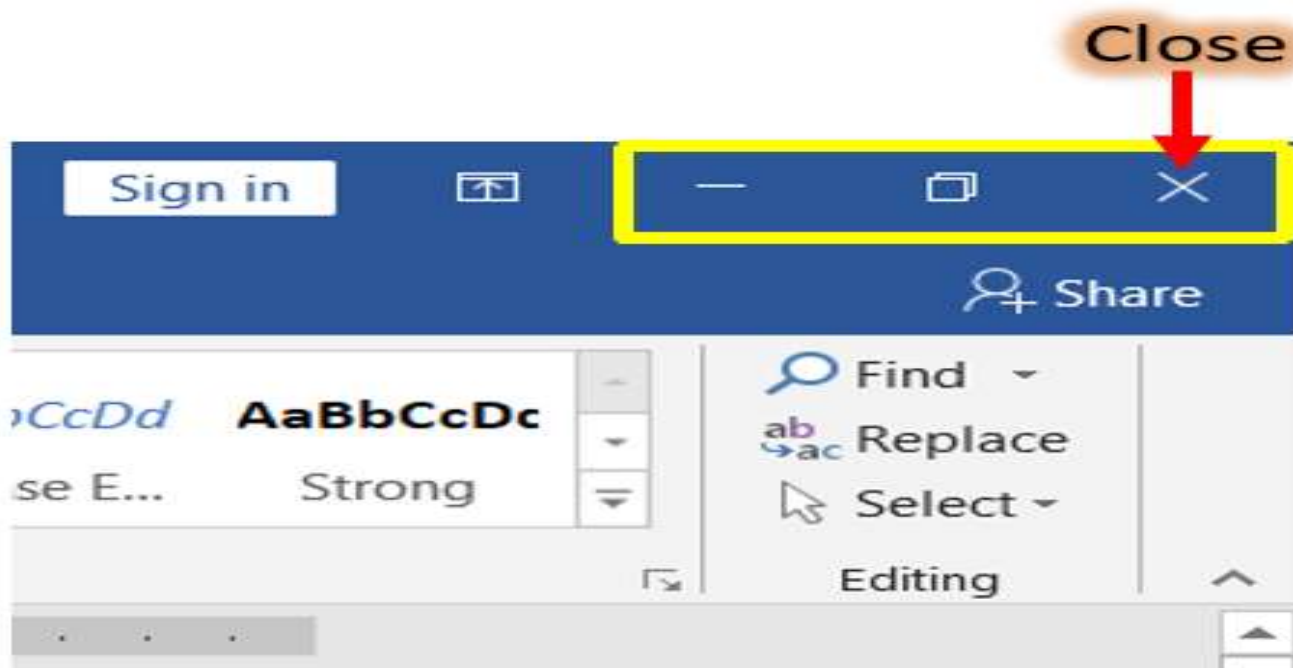
m

Maximize/Restore Down



Click on the Maximize button (When it is on the Restore down mode, then the size of a window fits the screen (desktop)).

Closing a Window:
Closing is an exit from the Application/Window.



Follow the steps below on “Closing” (Alt+F4) the window/application:
Click on the “Close” button as shown in the picture, which is at the top right corner of the title bar.

Resizing and Moving a Window

- Floating windows are always associated with the WinDbg window. If you minimize WinDbg, all floating windows are minimized. And if you restore WinDbg, all floating windows are restored. You can never put a floating window behind the WinDbg window.

Each floating window moves independently from each other and from the WinDbg window, unless you have selected **Move with frame** on the window's shortcut menu

- A docked window occupies a fixed position within the WinDbg frame. If you resize WinDbg, all of the docked windows are automatically scaled to the new size. The same situation applies to windows that have been docked in a separate dock.

If you move the mouse pointer to the border between two docked windows, the mouse pointer becomes an arrow. By dragging this arrow, you can resize the two adjacent windows and leave them in the docked state.

The WinDbg window is always filled with docked windows. There is never any empty area in the window unless there are no windows docked. The same situation applies to independent docks.

START MENU

- + Windows 10 gives users a Start menu that looks similar to pre-Windows 8 versions of Windows.
- + The Start button is available in the taskbar at the bottom or the top-left corner of the screen, depending on the taskbar orientation the user chooses.



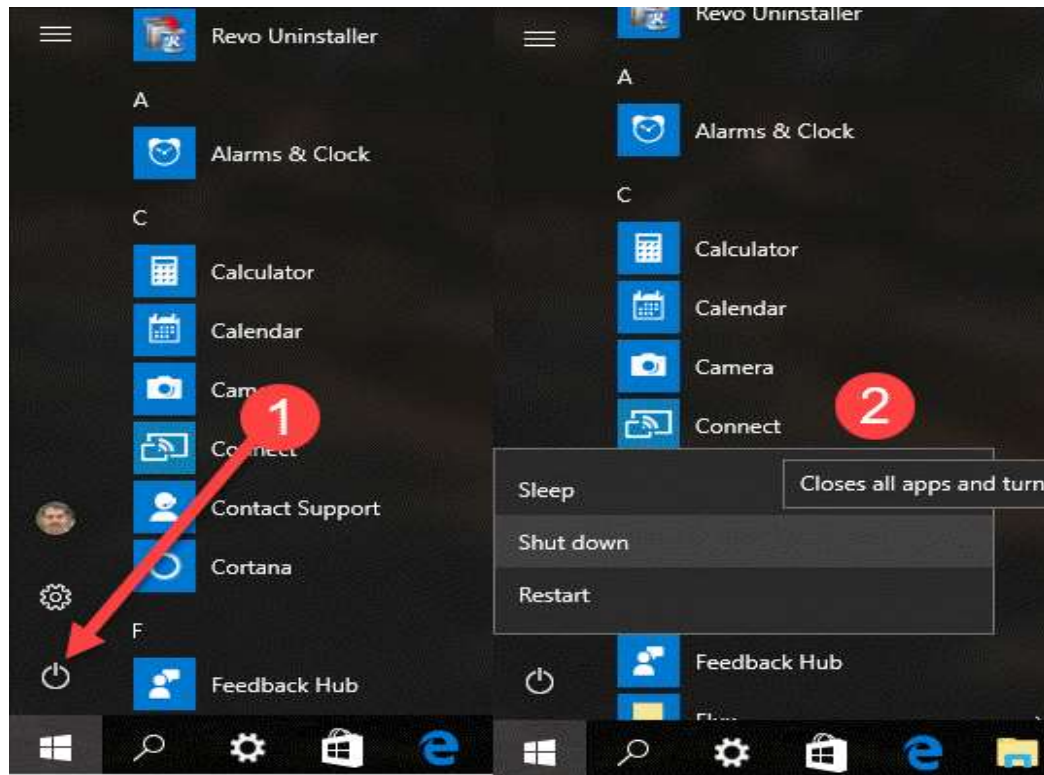
Shutting Down and Restart

If you're troubleshooting system problems, you'll want to perform a full shut down of the kernel to ensure Windows reinitializes things from scratch. To do this, just click the "Restart" option in the menu instead of the "Shut Down" option. Windows restarts your computer, but it performs a full shut down first and discards the state of the kernel while doing so.



You can also perform a full shut down by pressing and holding the Shift key on your keyboard while you click the "Shut Down" option in Windows. This works whether you're clicking the option in the Start menu, on the sign-in screen, or on the screen that appears after you press Ctrl+Alt+Delete.

Here is the Start Menu in Windows 10 v 1607 (Anniversary Update)



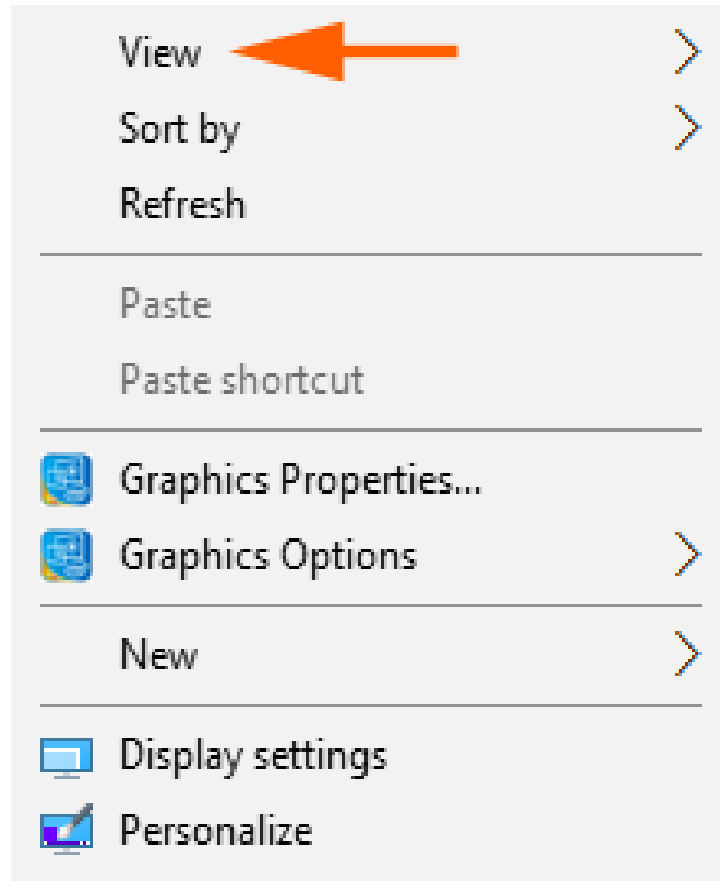
- if you prefer, you can instead perform a full shutdown by using the shutdown command from a Command Prompt or PowerShell window.
- To do so, open a Command Prompt or PowerShell window—
- example, by searching for “Command Prompt” in the Start menu and clicking its shortcut, or right-clicking the Start button and selecting “Windows PowerShell.” Type the following command, and then press Enter:

USER INTERFACE AND DESKTOP

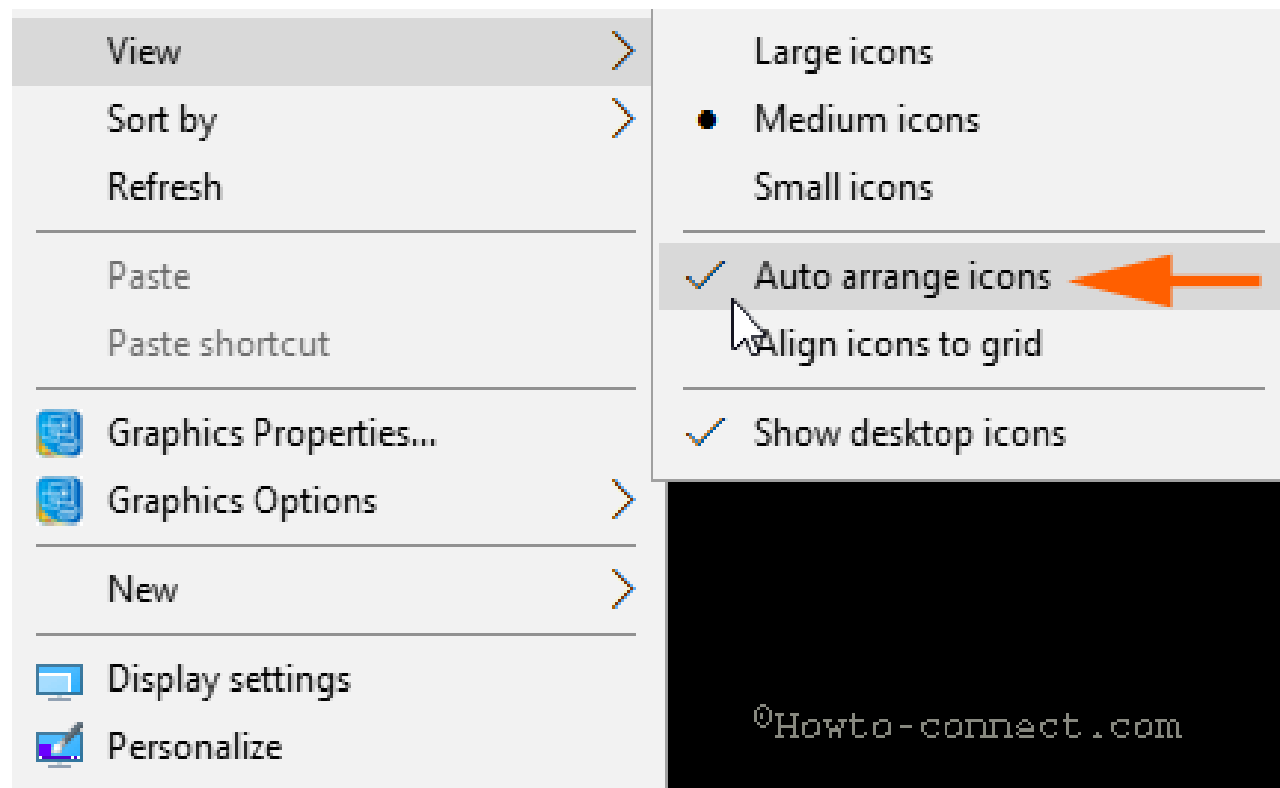
- + Windows 10's user interface changes its behavior depending on the type of device being used and available input methods.
- + A new feature called Continuum handles transitions between interface modes on convertible laptops and tablets with docking keyboards.
- + A new virtual desktop system known as Task View was added.
- + Windows Store apps, which previously could only be used full-screen, can now be used in desktop windows or full-screen mode.

Auto Arrange Icons on Windows 10 Desktop

Step 1 – Right click on an empty space on Desktop and hover (put) your mouse pointer on View.



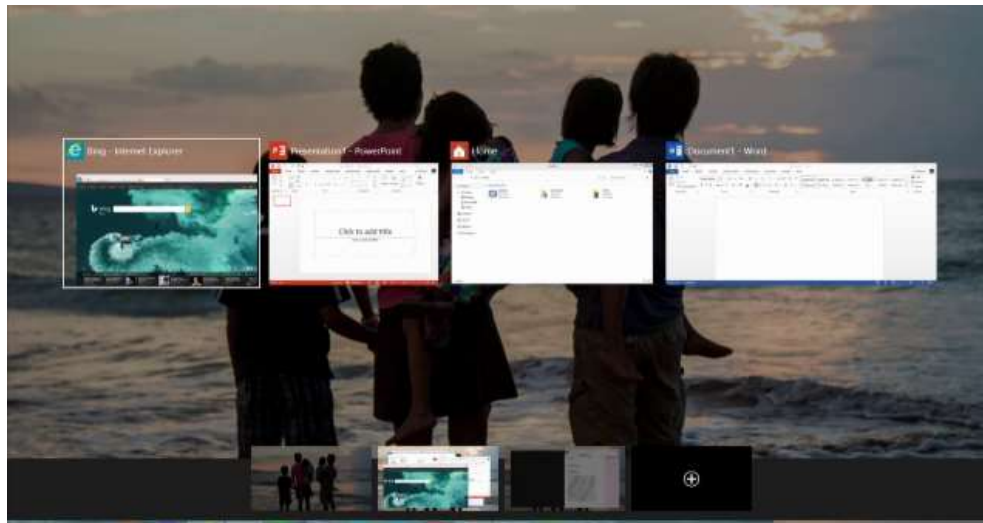
Step 1 – Instantly a submenu comes out with a list of options. Find Auto arrange icons on this submenu and click on it.



- Once you click the option Auto arrange icons, you find gets resettled instantly. The arrangement order of these remains same on the desktop. But when you remove or add an item, they resettle at the same time.
- For example, if you delete a folder then the rest of the folder's icon occupy the space emptied itself and in systematised way. In the same way, if you place a file on the desktop its icon will adjust automatically in order.
- You can understand the method to Automatic Arrangement of items on Windows 10 through the below animation

MULTIPLE DESKTOPS

- Microsoft has declined to support the feature in its desktop operating systems until now.
- The introduction of the Start screen in Windows 8 seemed to confirm that the Windows organizational strategy was focused on better single desktop management.
- In Windows 10, you can simply add or remove new desktop environments, and open programs in them when you do.



FEATURES

- + The Windows Store app ecosystem has been revised into "Windows apps".
- + Single platform for smartphones, tablets, and PCs
- + Return of Start menus
- + New browser, code-named Spartan
- + Multiple desktops
- + Cortana personal assistant for desktops
- + A major aspect of Windows 10 is a focus on harmonizing user experiences and functionality between different classes of devices.
- + Along with addressing shortcomings in the Windows user interface that was first introduced in Windows 8.

Screensaver

Screensaver Settings in Windows 10

Alternatively, right-click on your Windows 10 desktop, and select Personalize to open Personalization settings. Next click on Lock screen in the left pane. Scroll down the Lock Screen settings and click on Screen Saver Settings. The following window will open.